



Pesky Varmints, LLC

Office 239-353-PEST (7378)

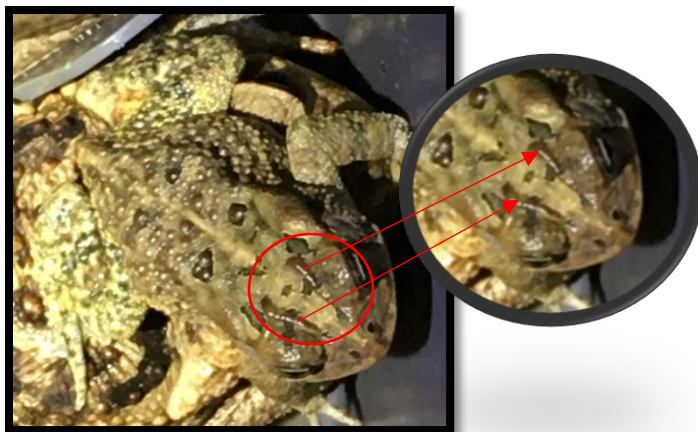
www.PeskyVarmintsFL.com

While working within your community for the removal of the invasive, toxic Cane toads, our team has noticed a nice population of native Southern toads as well as many species of tree frogs. With a population of native toads and other tree frogs, there are also tadpoles in the lakes that are not all from the Cane toads. These native species are beneficial to our ecosystem and we don't want to harm them while removing the Cane toads from property. Below are pictures and examples on how to identify different species.

Native Southern Toads:



These toads are the most common species that gets mistaken for the Cane toads. The Southern toads are smaller than the Cane toads and do not have the toxin glands. They are not harmful and are extremely beneficial to our ecosystem. They come out at night the same as Cane toads, they have similar markings, and love the heat and rain. The native Southern toad has a crest on the back of their head, marked below in red. The Cane toads do NOT have this crest. Also, the Southern toad has a rounder mouth, whereas the Cane toad is a little pointier. **See below pictures showing a native Southern toad and invasive Cane toad side by side.**



Above: Native Southern Toad – Crest on Head



Above: Toxic Cane Toad – NO Crest

Bringing Wildlife Back to the Wild



Pesky Varmints, LLC

Office 239-353-PEST (7378)

www.PeskyVarmintsFL.com

Tree Frogs:



Frogs seen on the ceiling, lights or walls are tree frogs, which are different from the Cane toads. Tree frogs have suction on their feet to allow them to climb walls, whereas toads do not. Tree frogs are not harmful like the Cane Toads. They can easily be mistaken for a juvenile Cane Toad, but even the juveniles will stick to the ground. The Cane toads are strictly ground dwellers, they do not have the suction on their feet, which means they do not climb. Although the Cuban Tree frog is an invasive species to our ecosystem, they do not carry the toxin glands like the Cane toads.

Below are pictures of juvenile Cane toads for reference;



Below are pictures of other species of frogs, NOT Cane toads;



Bringing Wildlife Back to the Wild



Pesky Varmints, LLC

Office 239-353-PEST (7378)

www.PeskyVarmintsFL.com

Cane Toads:



If you have come across what might be a Cane toad in your area, take a picture and email to us at PeskyVarmintsFL@aol.com and we will help to identify the species.

Bringing Wildlife Back to the Wild